



Guangdong Eurasian freezing  
Equipment Manufacturing Co., Ltd.



## CONTNEXT

- I Company Profile
- II Awards
- III Equipment Introduction
- IV Case Studies
- V Partnership

## | COMPANY PROFILE

Guangdong Eurasian Freezing Equipment Manufacturing Co., Ltd., a National High-Tech Enterprise, specializes in industrial-grade heating, cooling, and energy management solutions. Spanning core sectors—including HVAC, industrial cooling, waste heat recovery, and cold storage—we deliver precision temperature control systems and smart energy management solutions to 50+ industries globally.

- Innovation-Driven: 40+ proprietary patents power the "OYRR" series, including air/water-cooled chillers, oil-free centrifugal units, and ultra-low temperature heat pumps, all ISO9001-certified.
- Adaptive Solutions: 12 product lines engineered for diverse applications—commercial complexes, pharmaceuticals, renewable energy, and precision manufacturing.
- Scalable Production: 40,000m<sup>2</sup> smart factory with AI-driven quality control ensures annual max output of 10,000+ units, meeting global demand with rapid customization.
- Global Value Proposition.





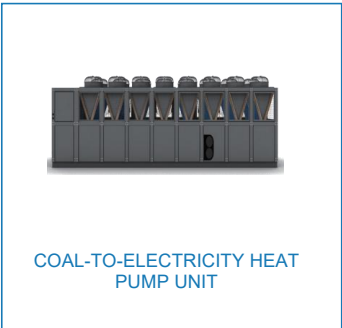
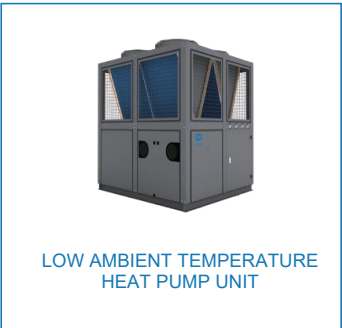
Technological Innovation Quality First



## Refrigeration Equipment



## Heating Equipment



## Other Equipment





# EQUIPMENT INTRODUCTION



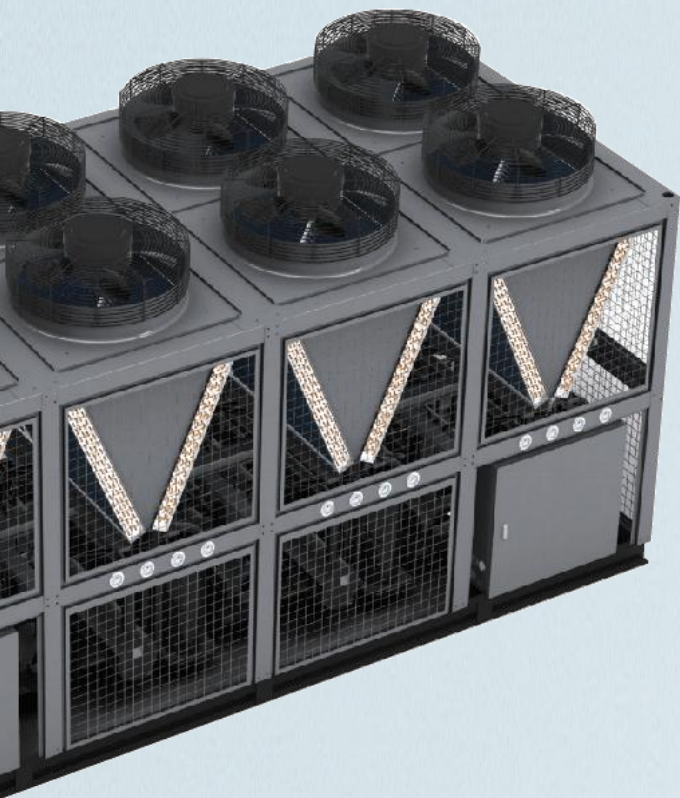
## TENT AIR CONDITIONER

- ⦿ Features: Dual air + water cooling, 150kW max cooling, IP67 waterproof/dustproof for extreme weather. Ideal for mobile and quick-install structures.
- ⦿ Specs: Cools 140-400m<sup>2</sup> (15-40HP), drops temp from 35°C to 23°C in 1 hour.
- ⦿ Output: Condensate (via dehumidification).
- ⦿ Benefits: Reliable, low failure rate, cost-effective maintenance, long-term savings.



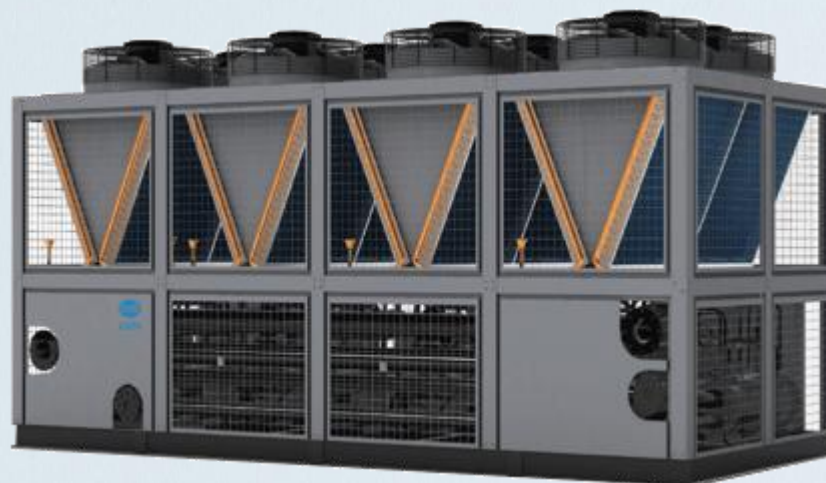
## TENT AIR CONDITIONER——TECHNICAL PARAMETER

Model OYC-Parameters			K(R)14AWF15	K(R)18AWF15	K(R)21AWF15	K(R)28AWF15	K(R)35AWF15	K(R)56AWF15	K84AWF35/H	K105AWF35/H
HP			5	6	7	10	12	20	30	40
Cooling	Cooling capacity	kW	14	17.5	21	28	34	56	84	105
		kcal/h	12040	15050	18060	24080	29240	48160	72240	90300
	Cooling power input	KW	4.36	6.24	7.2	9.72	11.5	17.2	30	37.2
Adjustable capacity		%	0-100	0-100	0-100	0-100	100	100	0,33,66,100	0,33,66,100
Air supply distance		m	≥15				≥15	≥15	≥25	≥25
Compressor	Type		Scroll				Scroll			
	Applied QTY	tower	1				1	2	3	3
Evaporator	Fin materialType		Hydrophilic louvered aluminum fin				Hydrophilic louvered aluminum fin			
	Tube materialType		Innergroover tube type				Innergroover tube type			
Condenser	Fin materialType		Hydrophilic louvered aluminum fin				Hydrophilic louvered aluminum fin			
	Tube materialType		Innergroover tube type				Innergroover tube type			
Condensing fan	Type		High efficiency Centrifuga				High efficiency Centrifuga			
	Air discharge type		Top air outlet				Top air outlet			
	Numbers	Pcs	1				1			
Condensing fan	Type		High efficiencyaxial				High efficiency axial			
	Air discharge type		Top air outlet				Top air outlet			
	Rated air flow	m <sup>3</sup> /h	5200*1	6200*1	7500*1	11000*1	12000*1	20000*1	30000*1	35000*1
Refrigerant	Type		R410a				R410a			
	Charge amount	kg	3	3	4	7.5	7.8	7.8×2	7.5x3	7.8x3
Unit dimension	W*D*H	mm	950*1380*1250	950*1380*1250	950*1380*1250	955*1580*1280	955*1580*1280	1100*2740*2300	1100*2740*2300	1100*2740*2375
Unit noise level		dB(A)	60	63	63	65	65	68	71	71
Unit weight		kg	270	356	388	540	590	980	1420	1350



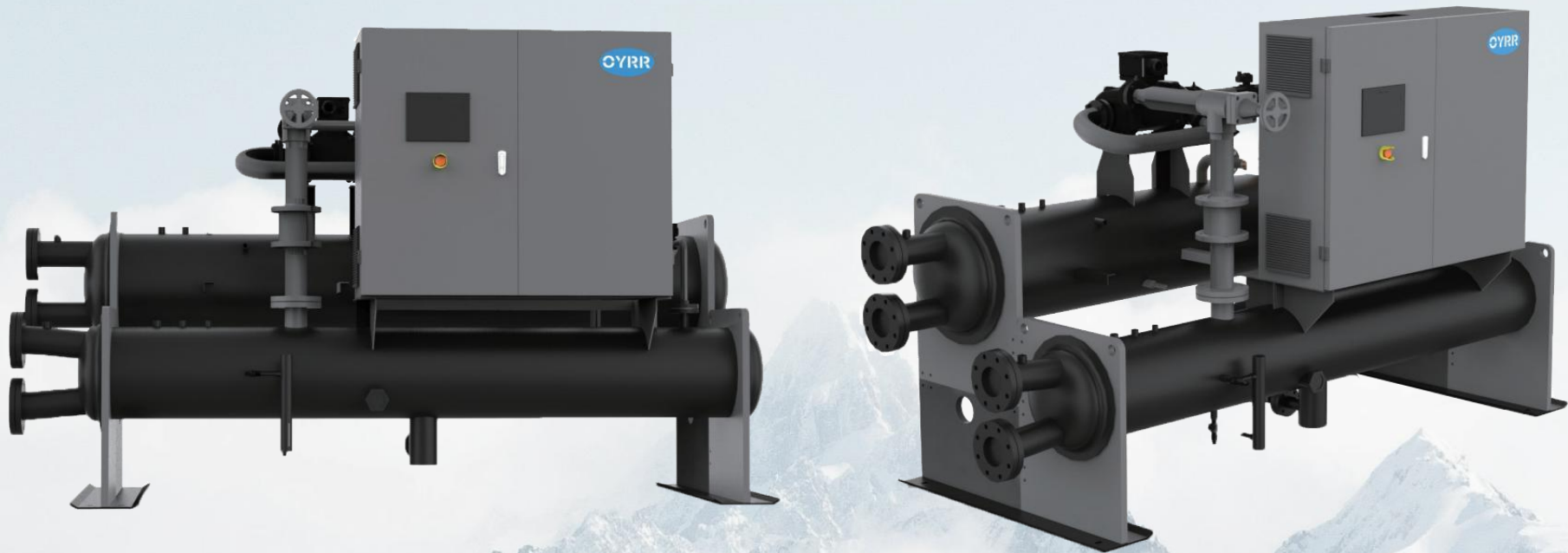
## AIR-COOLED MODULAR UNIT

- The unit delivers substantial cooling capacity ranging from 260-1300KW. Its compact design minimizes installation space requirements, significantly reducing building space usage and installation workload.
- The large scroll heat pump module operates effectively in broad environmental conditions:
  - Cooling mode: 15~48°C ambient temperature
  - Heating mode: -15~30°C ambient temperature



## AIR-COOLED MODULAR UNIT—TECHNICAL PARAMETER

Model	OY-		R(K)Z.5AWF	R(K)12AWF	R(K)20AWF/T	R(K)25AWF/T	R(K)30AWF/T	R(K)40AWF/T	R(K)50AWF/T	R(K)65AWF
Rated Cooling	Capacity	× 1000 kcal/h	6.4	10.3	17.2	21.7	25.8	34.4	43.0	55.9
		kW	7.5	12.0	20.0	25.2	30.0	40.0	50.0	65
	Input power	KW	2.33	3.72	6.21	785	9.32	12.38	15.53	20.19
	Rated current	A	4.1	6.6	11	13.9	16.5	21.9	27.4	35.7
Rated Heating	Capacity	× 1000 kcal/h	6.8	11.0	18.7	22.5	28.2	37.0	46.4	61.5
		KW	7.9	12.8	21.8	26.2	32.8	43.0	54.0	71.5
	Input power	KW	2.38	3.85	6.56	7.88	9.87	12.92	16.24	21.51
	Rated current	A	4.20	6.80	11.59	13.93	1743	22.83	28.69	38.00
Power Supply			380V/3N/50Hz							
Protection Device			Phase Reversion Protection Phase Lack Protection veroad Curent ProtectionLow&HighPressureProtection LowTemp.Protection WaterFlowProtection							
Number Of Refrigeration Circuit			1			2			1	
Refrigerant			R410A							
Capacity Control			100			0,50,100			100	
Condenser			Ripple Aluminum Finsaround Copper Pipe							
Power Input of Fan			0.24	0.24	0.65	1.13	1.13	1.85	1.13×2	1.13×2
Evaporator			Shell-and-Tube Type							
Water Side max Pressure			1							
Dia.of pipe to Evaporator(inch)			1-1/2"(nternal teeth)	1-1/2"(nternal teeth)	1-1/2"(nternal teeth)	1-1/2"(nternal teeth)	2"(Internal teeth)	2"(nternal teeth)	2"(Internal teeth)	2-1/2"(nternal teeth)
Chilled WaterFlow m³/h			21	34	57	72	86	115	143	186
Kpa Evaporator Water pressure drop			13	14	17	23	28	30	28	30
Running noise dB(A)			61	61	61	63	63	65	65	65
Total Weight kg			120	150	330	360	405	485	625	645
Unit size	L	mm	1050	1050	1050	1050	1200	1250	2200	2050
	w	mm	800	800	1040	1040	1040	1100	1040	1050
	H	mm	1150	1150	1750	1750	1750	1750	1750	2250



## AIR SUSPENSION CENTRIFUGAL CHILLER UNIT

- ④ The air bearing centrifugal chiller delivers dual-stage premium energy efficiency, with cooling capacity ranging from 260 to 2460KW. It achieves a maximum COP exceeding 6.8 and IPLV rating up to 11.
- ④ Featuring the latest variable-frequency dynamic-pressure air bearing centrifugal compressor, this unit adopts an oil-free design with eco-friendly refrigerant. It requires no oil change maintenance, ensuring extended service life. The compact design offers small footprint and low operational noise. Primarily applied for equipment upgrades in New Quality Productivity manufacturing and replacement of high energy-consumption chiller systems.

## AIR SUSPENSION CENTRIFUGAL CHILLER UNIT——TECHNICAL PARAMETER

OY-		BKJ270M	BKJ320MQ	BKJ700MQ	BKJ850MQ	BKJ1400MQ	BKJ1580MQ	BKJ1720MQS	BKJ2100MQS	BKJ2560MQS	BKJ2800MQS	BKJ3200MQS	BKJ3450MQS	
		QS	S	S	S	S/T	S/T	/T	H	/H	/F	/F	F	
Refrigeration capacity	kW	266	315	701	855	1405	1580	1720	2120	2565	2815	3180	3450	
	USRT	75.6	89.6	1993	241.7	399.5	449.3	489.1	602.8	729.3	800.4	909.9	981.0	
	kcal/h	232,146	270,837	602,720	735,129	1,203,720	1,358,484	1,478,856	1,822,776	2,205,387	2,420,337	2,734,164	2,966,310	
Power consumption	kW	42.9	51.2	107.5	130.3	206.0	231.3	252.2	309.9	376.7	409.2	4656	502.9	
COP	kW/kW	6.18	6.15	6.52	6.56	6.82	6.83	6.82	6.84	6.81	6.88	6.83	6.86	
IPLV	kW/kW	8.23	8.18	8.56	8.52	9.15	9.12	9.23	9.16	9.21	9.26	9.22	9.21	
Chilled water flow	m <sup>3</sup> /h	46	54.2	120.6	147.1	241.7	271.8	295.8	364.6	441.2	484.2	547.0	593.4	
	L/m	164	195	434	529	870	978	1065	1313	1588	1743	1969	2136	
Cooling water flow	m <sup>3</sup> /h	57.0	67.7	150.7	183.8	302.1	339.7	369.8	455.8	561.5	605.2	683.7	741.8	
	L/m	205	244	543	662	1087	1223	1331	1641	1985	2179	2461	2670	
Chilled water running resistance	kPa	79	61	54	45	77	76	78	86	83	55	54	56	
Running resistance of cooling water	kPa	82	65	64	54	86	82	83	87	86	59	58	60	
Compressor	Quantity	1	1	1	1	2	2	2	3	3	4	4	4	
Evaporator	spicies	Shell nd tube faling flm type						Shell nd tubeflligflmtype						
	Quantity	PCS	1						1			2		
Condenser	spicies	Shelland tube type						Shel and tube type						
	Quantity	PCS	1						1			2		
Refrigerant	Refrigerant name	R134a						R134a						
	Number of cycles	1			2			2		3		4		
	Flow control mode	Electronic expansion valve						Electronic expansion valve						
	amount	kg	102	125	300	326	520	536	546	625	668	780	820	836
Electrical control	Siemens PLC, Chinese LCD touch screen													
Load control	%	25%-100% Stepless energy control												
Security protection	Main circuit fuse, over current protection, power reverse phase protection, high and low voltage protection, over current protection, compressor overheat protection, abnormal water temperature protection, abnormal sensor protection, excessive exhaust temperature protection, anti-freeze protection, frozen water pressure difference protection													
Thermal insulation material	Foam plastic													
Nozzle size	Evaporator in/ out	DN125					DN150		DN200				DN250	
	Condenser in/ out	DN125					DN150		DN200				DN250	
overall dimension	L	mm	2250		3400		4170		4170		4350		4350	
	W	mm	1265		1280		2140		2140		2260		2260	
	H	18	1770		2250		2310		2310		2490		2490	
Unit weight	kg	2100	2250	3500	2800	5800	6200	6500	7600	8100	8500	9950	10500	

## HIGH TEMPERATURE WATER SOURCE HEAT PUMP

- ⦿ Features: High Efficiency & Cost-Effectiveness: High-temperature water source heat pumps recover low-grade waste heat (e.g., industrial wastewater, geothermal tailwater) to produce 65–95°C hot water
- ⦿ Specs: Zero carbon emissions replace fossil-fuel boilers, using eco-friendly refrigerants (e.g., R134a, R1233zd) aligned with carbon neutrality goals, while leveraging renewable water-based thermal energy
- ⦿ Benefits: Applicable to industrial (e.g., food processing, chemical heating), commercial, and residential sectors, supporting heating, cooling, and hot water via modular designs for high-temperature demands.



## HIGH TEMPERATURE WATER SOURCE HEAT PUMP——TECHNICAL PARAMETER

Model OY - RG J		350MLS	400MLS	480MLS	540MLS	650MLS	740MLS	850MLS	980MLS	1140MLS	1250MLS	1550MLS	1740MLS
Rated heat capacity User side: 77/85°C Heat source side: 35/30°C	× 1000kcal/h	298	344	411	467	556	633	729	844	976	1073	1335	1497
	Heating capacity kW	346.8	399.7	478.2	543.2	647	736.3	847.4	981.1	1134.7	1247.9	1552.6	1740.4
	Input Power kW	128	147.2	175.7	198.4	219.4	249.8	286.4	323.2	378.2	433.5	509.6	573.1
	Rated current A	224.6	258.2	308.2	348.1	384.9	438.2	502.5	567.0	663.5	760.5	894.0	1005.4
	COP	2.71	2.72	2.72	2.74	2.95	2.95	2.96	3.04	3.00	2.88	3.05	3.04
Maximum heating Use side: 77/85°C Heat source side: 42/37°C	Heating capacity kW	418.6	482.7	577.5	656.3	772.2	878.7	999.4	1144.1	1322.4	1482.8	1851.2	2074.8
	Input Power kW	130.6	150.2	179.3	202.4	223.9	254.9	291.8	331.9	388.3	455.6	535.3	602.3
Heating Use side: 72/80°C Heat source side: 35/30°C	Heating capacity kW	352.4	406.2	486	552.3	658.3	749.1	859.8	998.4	1154.2	1280.3	1597.2	1790.1
	Input Power kW	118.1	135.9	162.2	183.1	201.4	229.3	263.2	297.6	348.2	404.4	475.2	534.6
Heating Use side: 67/75°C Heat source side: 25/20°C	Heating capacity kW	289.9	334.1	399.7	454.1	535.1	608.9	701.3	807.6	934	1043.4	1299.1	1456.2
	Input Power kW	105.5	121.3	144.8	163.5	179.3	204	234.1	261.9	306.4	354.1	416.1	468.1
Protective devices		Reverse phase protection, phase loss protection, overcurrent protection, exhaust temperature protection, high and low pressure protection, low temperature protection, high temperature protection, water flow protection											
Number of compressors		1	1	1	1	1	1	1	1	1	1	1	1
Refrigeration circuit		1	1	1	1	1	1	1	1	1	1	1	1
Energy Control%		0,25,50,75,100 or 25-100% stepless adjustment											
Using side (condenser)	type	Shell and tube	Shell and tube	Shell and tube	Shell and tube	Shell and tube	Shell and tube	Shell and tube	Shell and tube	Shell and tube	Shell and tube	Shell and tube	Shell and tube
	Maximum pressure on water side MPa	1	1	1	1	1	1	1	1	1	1	1	1
	Inlet and outlet pipe diameter	DN80	DN100	DN100	DN100	DN125	DN125	DN150	DN150	DN150	DN150	DN200	DN200
	Water production m³/h	4.3	4.9	5.9	6.7	7.9	9.0	10.4	12.1	13.9	15.3	19.1	21.4
	Circulating water flow m³/h	37.3	43.0	51.4	58.4	69.5	79.1	91.1	105.4	122.0	134.1	166.9	187.1
	Water pressure drop KPa	55	60	63	65	68	72	80	88	95	98	98	98
Heat source side (evaporator)	type	Shell and tube											
	Maximum pressure on water side MPa	1	1	1	1	1	1	1	1	1	1	1	1
	Inlet and outlet pipe diameter inch	DN80	DN100	DN100	DN100	DN125	DN125	DN150	DN150	DN150	DN150	DN200	DN200
	Water flow m³/h	37.6	43.4	52.0	59.3	73.5	83.7	96.5	113.1	130.1	140.1	179.4	200.7
	Water pressure drop KPa	70	71	73	78	78	85	85	95	98	99	99	99
Operating weight(kg)		3176	3255	3681	3948	4108	4410	5155	5478	5779	6456	7648	8068
Unit size	length ( m m ) A	3200	3200	3200	3200	3250	3250	3250	3300	3300	3500	3550	3600
	Width ( m m ) B	1380	1380	1400	1400	1400	1430	1450	1480	1480	1500	1550	1600
	high ( m m ) C	1500	1500	1550	1550	1550	1550	1600	1650	1650	1700	1750	1800



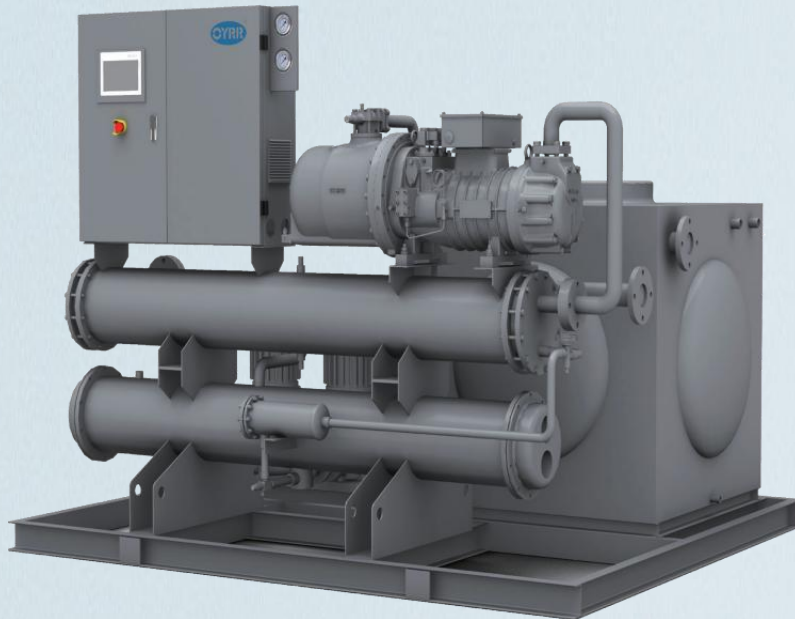
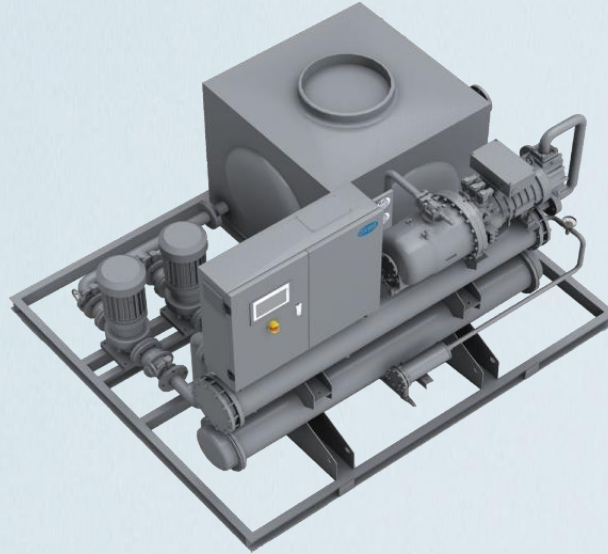
## FALLING FILM WATER CHILLER

- The unit utilizes high-temperature heat pump screw/scroll compressors, delivering hot water output temperatures ranging from 50-125°C. It generates steam under 2kg pressure with a capacity range of 0.1-10 steam tons, perfectly meeting industrial hot water requirements for various applications including industrial drying, food processing, slaughterhouse operations, pharmaceutical manufacturing, surface treatment processes, and chemical industries. It also serves as an energy-efficient alternative for municipal steam systems and boiler applications.
- The entire system is designed with high-temperature operation principles, featuring components specifically engineered for high-temperature conditions to significantly enhance system reliability. Available in 20 standard models with heating capacities ranging from 135kW to 2200kW.



## FALLING FILM WATER CHILLER—TECHNICAL PARAMETER

Model OY -		KJ370LS	KJ400LS	KJ440LS	KJ520LS	KJ550LS	KJ610LS	KJ650LS	KJ680LS
Cooling capacity	× 1000kcal/h	318.2	344	378.4	447.2	473	524.6	559	584.8
	kW	370	400	440	520	550	610	650	680
	USRT	105.2	113.7	125.1	147.9	156.4	173.4	184.8	193.3
Input Power	kW	65.5	70.5	77.2	92	96.7	105.6	114.4	119.6
Unit operating current A		122	131	141	170	176.4	197	210	220.2
Power supply		380V/3N/50Hz							
Protective devices		Reverse phase protection, phase loss protection, overcurrent protection, exhaust temperature protection, high and low pressure protection, low temperature protection, water flow protection							
Refrigerant		R22							
Number of compressors		1							
Refrigeration circuit		1							
Energy Control%		Infinite capacity adjustment or 0,25,50,75,100							
Condenser	type	Shell and tube							
	Maximum water side pressure MPa	1							
	Inlet and outlet pipe diameter inch	4"	5"	5"	6"	6"	6"	6"	6"
	Inlet/outlet water temperature °C	30/35	30/35	30/35	30/35	30/35	30/35	30/35	30/35
	Cooling water flow m³/h	74.9	80.9	88.9	105.2	111.2	123.1	131.5	137.5
	Water pressure drop KPa	41	41	55	60	63	63	65	65
Evaporator	type	Shell and tube							
	Maximum water side pressure MPa	1							
	Inlet and outlet pipe diameter inch	4"	5"	5"	6"	6"	6"	6"	6"
	Inlet/outlet water temperature °C	12/7	12/7	12/7	12/7	12/7	12/7	12/7	12/7
	Chilled water flow m³/h	63.6	68.8	75.7	89.4	94.6	104.9	111.8	116.9
	Water pressure drop KPa	65	65	70	71	73	73	78	78
Operation noisedB(A)		70	70	72	72	72	73	73	75
Machine weight(kg)		1920	2080	2170	2300	2385	2650	2760	3120
Operating weight(kg)		2269	2354	2452	2520	2660	2870	3020	3410
Unit size	length(mm)	3235	3235	3235	3235	3255	3255	3355	3355
	Width(mm)	1150	1200	1200	1250	1300	1400	1450	1450
	high(mm)	1450	1450	1550	1550	1620	1620	1700	1700



## INDUSTRIAL CHILLER

- ⦿ This industrial integrated unit is specifically designed for industrial applications. It combines the refrigeration unit, chilled water storage tank, chilled water circulation pump, process water pump, piping system with valves, and control cabinet into one complete system, fully integrated into production lines.
- ⦿ The integrated design enables simple installation and commissioning. The control interface directly displays fault information for quick troubleshooting. With compact structure and small footprint, the unit offers flexible placement options. It can be customized according to different industry requirements and project specifications.

## INDUSTRIAL CHILLER——TECHNICAL PARAMETER

Model		G2200LS II	G2340LS II	G2510LS II	G2780LS II
Refrigerant		R407C	R407C	R407C	R407C
Rated Cooling Capacity	× 1000 kcal/h	1821.2	1936.4	2082.5	2309.5
	kW	2118	2252	2422	2686
	USRT	602	640	689	764
Inputpower	kW	336.2	356.4	391.4	431.4
Comp current		608	644	706	786
Protection Device		Phase Reversion Protection Phase Lack Protection Overload Current Protection Discharge AirTemperature Protection			
Number Of Refrigeration Circuit		2			
Capacity Control %		Stepless Capacity Control/0, 25, 37.5, 50, 62.5, 75, 87.5, 100			
Control mode		Microcomputer Control/PLC Control			
Refrigerant charge kg		319	339	365	405
Condenser		Shell-and-Tube Type			
Water Side max Pressure Mpa		1			
Dia.of pipe to Condenser in		6"x2	6"x2	8"x2	8"x2
Cooling Water Flow m³/h		422.0	448.6	483.8	536.1
Condenser Water Pressure drop		95	100	105	110
Evaporator		Shell-and-Tube Type			
Water Side max Pressure Mpa		1			
Dia.of pipe to Evaporator(inch) in		8"	8"	10"	10"
Chilled Water Flow m³/h		364.2	387.3	416.5	461.9
Evaporator Water pressure drop Kpa		100	104	110	115
Running noise dB(A)		85	87.0	88	90
Total Weight kg		4770	4930	5210	5530
Running Weight kg		5720	5920	6250	6640



## COMBINED AIR CONDITIONER

- The unit features a thermal-break aluminum alloy frame structure that enhances structural integrity while effectively addressing persistent industry challenges including air leakage, structural weakness, and thermal bridging. Key characteristics include compact construction, aesthetic design, easy installation and maintenance, high structural rigidity, and minimal air leakage.
- This product series finds extensive applications across industrial and commercial sectors. Industrial applications include electronics, precision manufacturing, textiles, tobacco, pharmaceuticals, food processing, power plants, light industry, rail transit, and aerospace. Commercial and civil applications cover office buildings, shopping malls, theaters, hotels, and other medium-to-large public spaces requiring comfort air conditioning.



## COMBINED AIR CONDITIONER——TECHNICAL PARAMETER

Model		OYZK03	OYZK04	OYZK05	OYZK06	OYZK08	OYZK10	OYZK12	OYZK15	OYZK18	OYZK20	OYZK23	OYZK25	OYZK28	OYZK30	OYZK35	OYZK40	OYZK45	OYZK50	OYZK55	OYZK60
Air volume	CMH	3000	4000	5000	6000	8000	10000	12000	15000	18000	20000	23000	25000	28000	30000	35000	40000	45000	50000	55000	60000
Cooling capacity (4rows)	kW	18.6	25.9	32.2	37.2	50.5	60.3	72.9	98.5	118.2	139.4	145.5	169.4	185.4	199.2	235.6	271.1	286.1	322.6	355.6	382.9
Cooling capacity (6rows)	kW	24.2	31.5	39.2	45.5	62.7	78.6	94.3	119.2	143	167.7	185.5	203.5	225.8	239.6	283.3	325.6	372.1	419.8	448.6	467.4
Heating capacity	kW	9	12	15	18	24	30	36	45	54	60	60	72	72	75	90	100	108	120	132	144
Humidification capacity	kg/h	4	5	10	10	13	13	15	15	25	30	30	45	45	45	30×2	30×2	30×2	30+45	30+45	45×2
External residual pressure	Pa	500	500	500	500	500	600	600	600	600	700	700	700	700	700	800	800	800	800	800	800
Motor power	KW	1.5	2.2	2.2	3	4	5.5	5.5	7.5	11	11	15	15	15	15	18.5	22	30	30	30	37
L	mm	2700	2800	2800	2800	2600	2700	2800	2950	3050	3100	3200	3500	3600	3700	3900	3850	4850	4550	4750	4750
w	mm	800	1000	1150	1050	1300	1500	1500	1800	2100	1950	2200	2350	2100	2250	2250	2500	2500	2750	3000	3250
H	mm	880	880	880	1130	1130	1130	1330	1330	1330	1530	1530	1530	1880	1950	2250	2250	2570	2570	2570	2570
A	mm	310	310	410	410	410	410	410	510	510	510	510	610	610	710	710	710	710	810	810	810
B	mm	400	500	500	500	800	800	1000	1250	1400	1400	1600	1500	1700	1500	1400	2000	2000	2000	2500	2500
C	mm	200	200	250	320	320	320	400	500	500	500	500	500	630	630	800	800	800	1000	1000	1000
D	mm	210	210	210	210	210	310	310	310	310	410	410	410	410	410	410	510	510	510	510	510
E	mm	322	361	361	361	404	453	507	565	638	638	715	715	801	801	898	898	1007	1007	1030	1030
F	mm	322	361	361	361	404	453	507	565	638	638	715	715	801	801	898	898	1007	1007	1030	1030
Chilled water pipes	Return air/4R	DN25	DN25	DN25	DN25	DN32	DN32	DN32	DN40	DN40	DN50	DN50	DN50	DN65	DN80	DN80	DN80	2×DN65	2×DN65	2×DN65	2×DN80
Chilled water pipes	Return air/6R	DN25	DN25	DN32	DN32	DN32	DN40	DN40	DN40	DN50	DN50	DN50	DN65	DN65	DN80	DN80	DN80	2×DN65	2×DN65	2×DN65	2×DN80
Condensate pipe		DN25	DN25	DN25	DN25	DN25	DN25	DN25	DN32	DN32	DN32	DN32	DN32	DN32	DN40	DN40	DN40	DN40	DN40	DN40	DN40



## EVAPORATIVE COOLING UNIT

- ⓘ Single module capacity: 80-1300KW (multi-module combinable). Equipped with premium compressors, high-efficiency shell-and-tube heat exchangers, electronic expansion valves, and eco-friendly refrigerant.
- ⓘ Dual falling film · Dual balance · Dual high-efficiency
- ⓘ Modular design enables coordinated module control. Compact integrated structure includes built-in cooling water pumps with spray system.
- ⓘ Features low-noise fans and multiple refrigeration systems for strong backup capability.

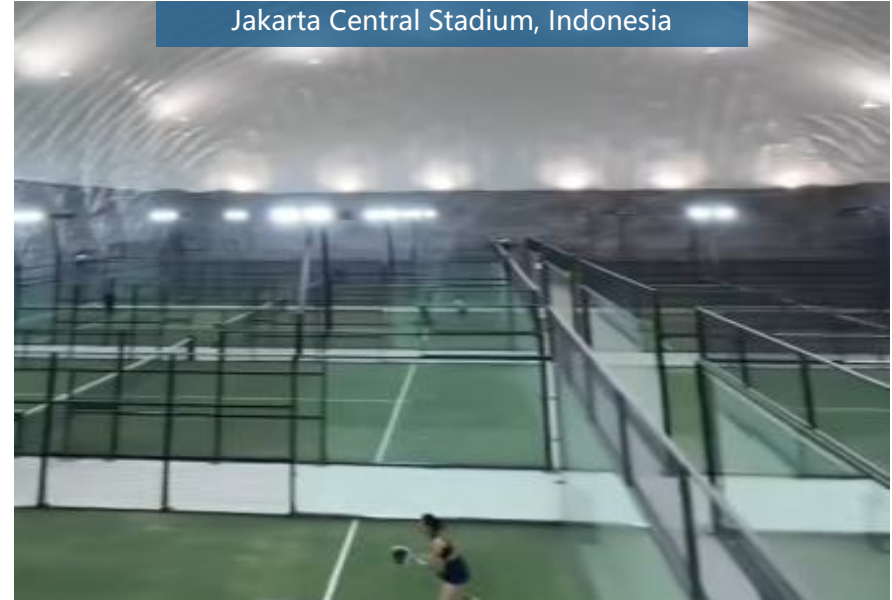
## EVAPORATIVE COOLING UNIT — TECHNICAL PARAMETER

Category	Parameter	Unit	BK100AWZ/T	BK100AWZ/T	BK150AWZ/H	K84AWZ	K168AWZ/T	BK250AWZ/H
Unit Performance	Nominal Cooling Capacity	kW	100	130	150	84	168	250
	Nominal Cooling Capacity	RT	28	37	43	24	48	71
	Nominal Input Power	kW	23	29	34	19	36.5	55
	SCOP	W/W	4.35	4.48	4.41	4.42	4.6	4.55
User Side	Water Flow Rate	m <sup>3</sup> /h	17	22	26	14	29	43
	Inlet/Outlet Pipe	mm	DN65	DN65	DN65	DN50	DN80	DN100
	Pressure Drop	kPa	70	70	70	70	70	70
Unit System	Refrigerant	-	R410A	R410A	R410A	R410A	R410A	R410A
	No. of Refrigeration Systems	-	2	2	3	1	2	3
	No. of Compressors	-	2	2	3	1	2	3
	Compressor Type	-	Inverter Scroll	Inverter Scroll	Inverter Scroll	Fixed Freq. Scroll	Fixed Freq. Scroll	Inverter Scroll
Application Requirements	Make-up Water Volume	m <sup>3</sup> /h	0.2	0.26	0.3	0.17	0.34	0.5
Dimensions	Length	mm	2300	2300	2300	1700	2300	2300
	Width	mm	1100	1100	1100	1100	1500	1850
	Height	mm	2800	2800	2800	2600	2800	3150
Weight	Shipping Weight	kg	1000	1200	1350	800	1700	2300
	Operating Weight	kg	1300	1500	1650	1000	2000	2800

Jakarta Central Stadium, Indonesia



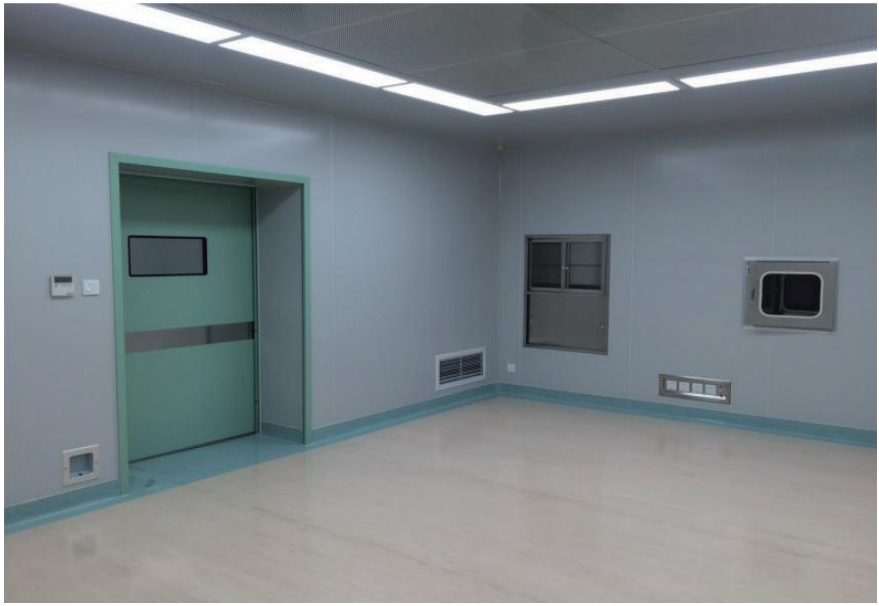
Jakarta Central Stadium, Indonesia



Cleanroom Installation Engineering



Hospital Preparation Room



# CYRR<sup>®</sup> OPERATING ROOM CASE

Medical Device Cleanroom Engineering



Hospital Operating Room Project



GMP Cleanroom Installation Project



Pharmaceutical Company



# CYRR<sup>®</sup> INDUSTRIAL WATER-COOLED COLD WATER CASE

Energy Company



Livestock Farming Enterprise



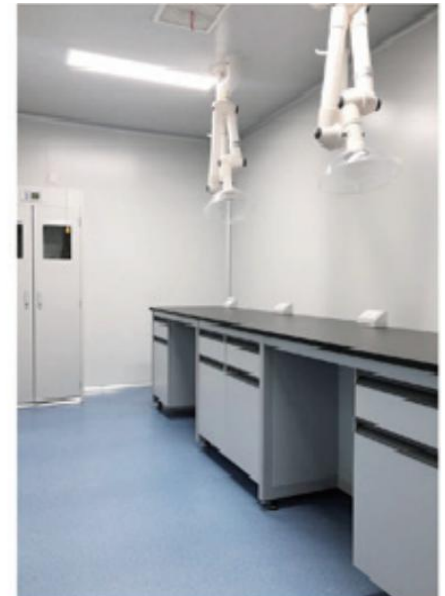
# INDUSTRIAL WATER-COOLED COLD WATER CASE

Pharmaceutical Research Institute



Laboratory





Public Health Laboratory



Water-for-Injection (WFI) Cleanroom



Cool Storage Warehouse



Cool Storage Warehouse



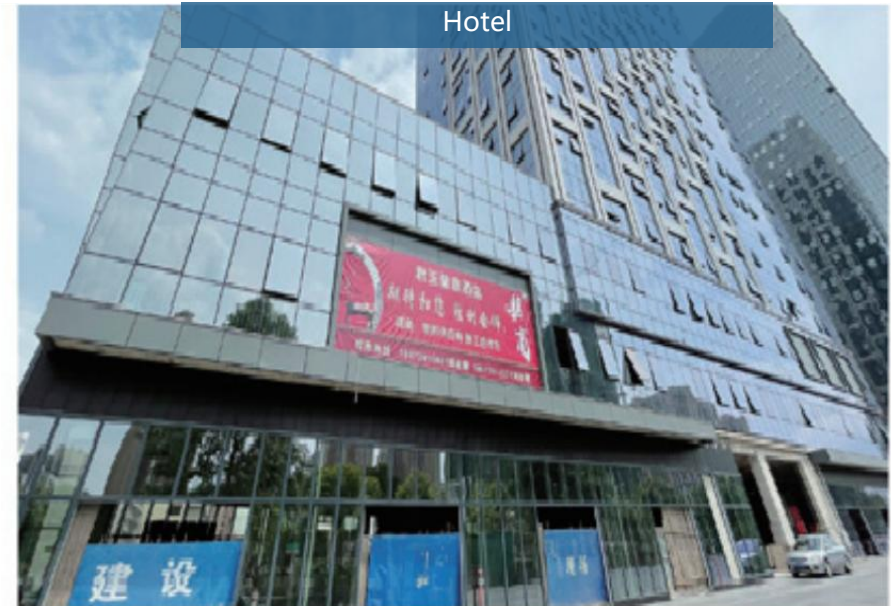
Pharmaceutical Company



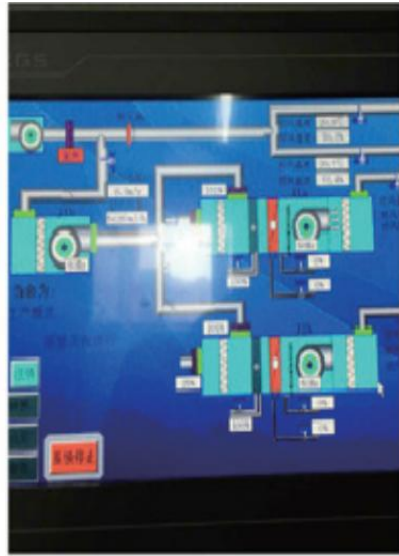
Shopping Mall



# CENTRAL AIR CONDITIONING SYSTEM CYRR®



# CYRR<sup>®</sup> CENTRAL AIR CONDITIONING SYSTEM



# CENTRAL AIR CONDITIONING SYSTEM **CYRR**<sup>®</sup>

Testing Laboratory



Testing Laboratory



# CYRR® CENTRAL AIR CONDITIONING SYSTEM

Precision Lens Production Cleanroom



Precision Lens Production Cleanroom



# HIGH-TEMPERATURE HEAT PUMP CASE

Food Manufacturer



Gas Production Company



# CYRR<sup>®</sup> HIGH-TEMPERATURE HEAT PUMP CASE

Budweiser Brewing Company Limited



Energy Research Institute



# COAL TO ELECTRICITY CONVERSION CASE

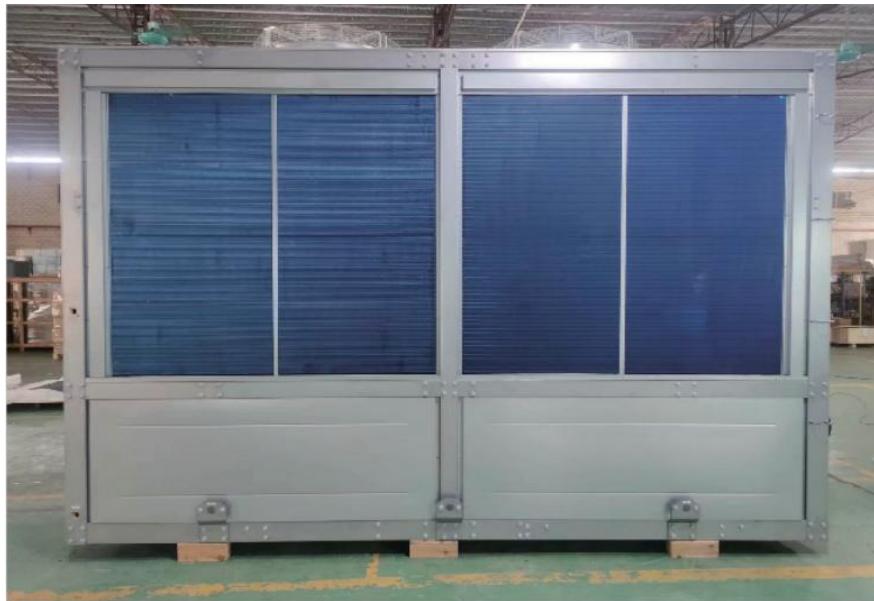


# CYRR® EVEAPORATIVE COLD CASE

Hospital



Materials Company







## Guangdong Eurasian freezing Equipment Manufacturing Co., Ltd.

---

E-mail  
Lee@oyrrhvac.com  
BoYang@oyrrhvac.com

Whats APP  
+86 139 2660 5818  
+86 139 0731 7409

Website  
<https://www.oyrrhvac.com>

Tiktok  
hvacequipmentfactory

---

Address  
Tangtang Jubao Industrial  
Park,  
Fogang County, Qingyuan City,  
Guangdong Province,China